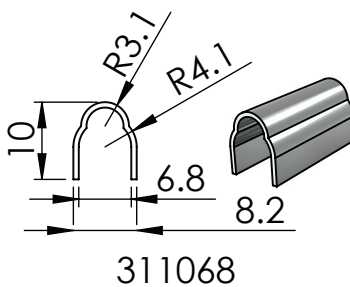
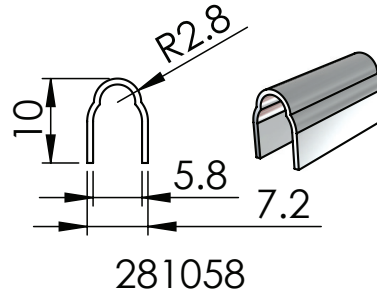
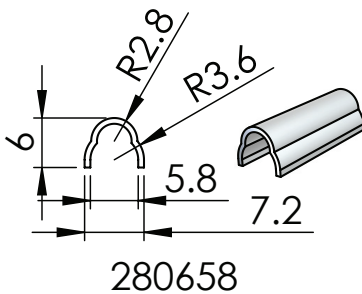
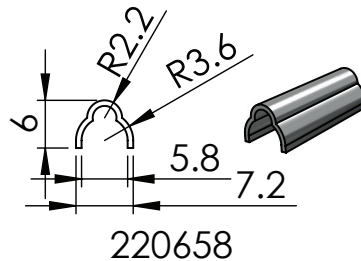
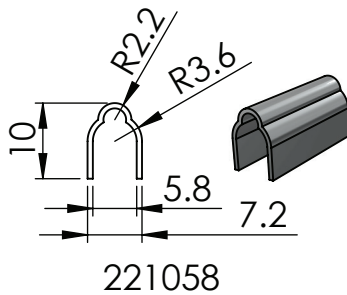
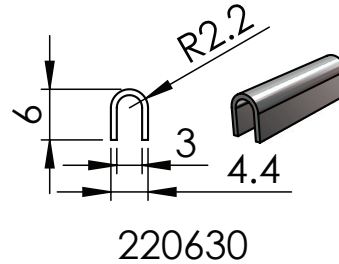
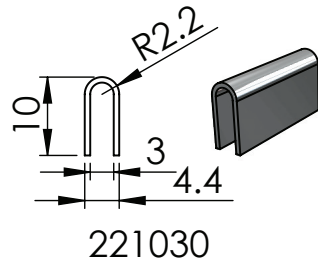


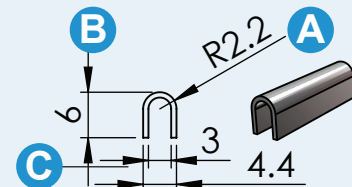
# Miracle Stainless steel cover track



- Specifications:
- 0.7mm thick
  - 304 stainless steel
  - 2375mm long
  - Bowing tolerance = Nil



## Selecting the right Miracle Stainless Steel Cover Track



- A** The Roller concave size used in the door carriage
- B** The depth of the existing door rail/track (Measure at end where there is no track damage)
- C** The thickness of the existing rail/track

All track products have a 6 digit code representing the specifications.

Eg: Part code: **311068**

### Digits 1 & 2:

The radius of the top curve to match roller concave.

### Digits 3 & 4:

The overall depth of the cover track from top to bottom.

### Digits 5 & 6:

The back opening of the cover track to fit over an existing damaged rail/track.